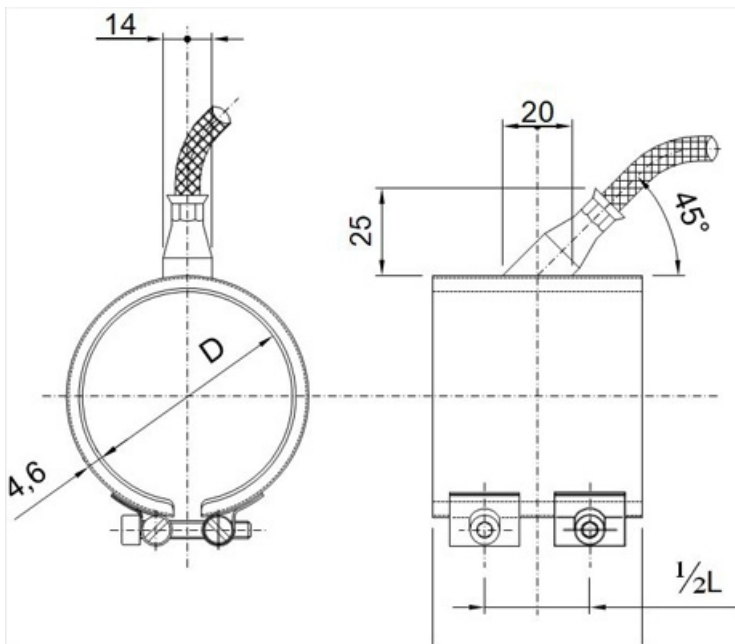


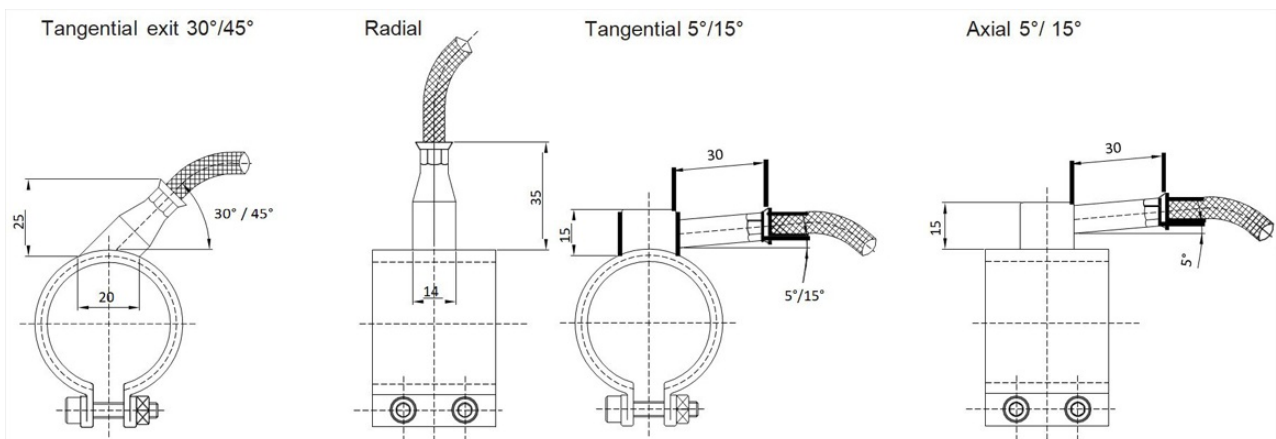
Nozzle heaters stainless steel long 400°C

Nozzle heaters and ring heaters are for example used for blow molding and injection molding and are mounted on the accumulator head of the extruder machine. IHP supplies qualitative nozzle heaters and other heating systems and heating techniques for molds where the melted plastics are processed to the final product after extruding.

Our nozzle heaters have a high surface load and uniform heat transfer over the total surface of the heater. We mount, optional, extra connection for, for example, external sensors in dimensions M8 x 1,25, M10 x 1,5, M12 x 1,75, M12 x 1,25, M14 x 2, M14 x 1,5, 1/8" GAS, 1/4" GAS and 3/8" GAS.



IHPs nozzle heaters of brass 320°C, stainless steel 370°C and 400°C and stainless steel 400°C long version can be produced with following cable exits.





Technical specification

Surface load up to 6W/cm²

Highest power 1600W in standard design

Working temperature up to 400°C

Supply 230V as standard (other supplies optional)

Built in thermocouple type J (optional)

Resistance wire of nickel/chrome 80/20

Built in insulation of pure micanite

Casing in stainless steel AISI430

Axial cable exit 45° as standard design

Metal braided supply cable 1000mm with earth

Largest diameter and length ø110 x 200mm



IHP International Heating Products AB

Hällebergsvägen 5, SE-443 60 Stenkullen, Sweden

Telefon: +46 (0)31 795 30 30 - Fax: +46 (0)31 795 30 39

Hemsida: www.ihp.se - E-post: info@ihp.se - Org. Nr. 556689-7327 - VAT Nr. SE556689732701

Bank: SEB Skandinaviska Enskilda Banken AB - Företaget innehar F-skattsedel